

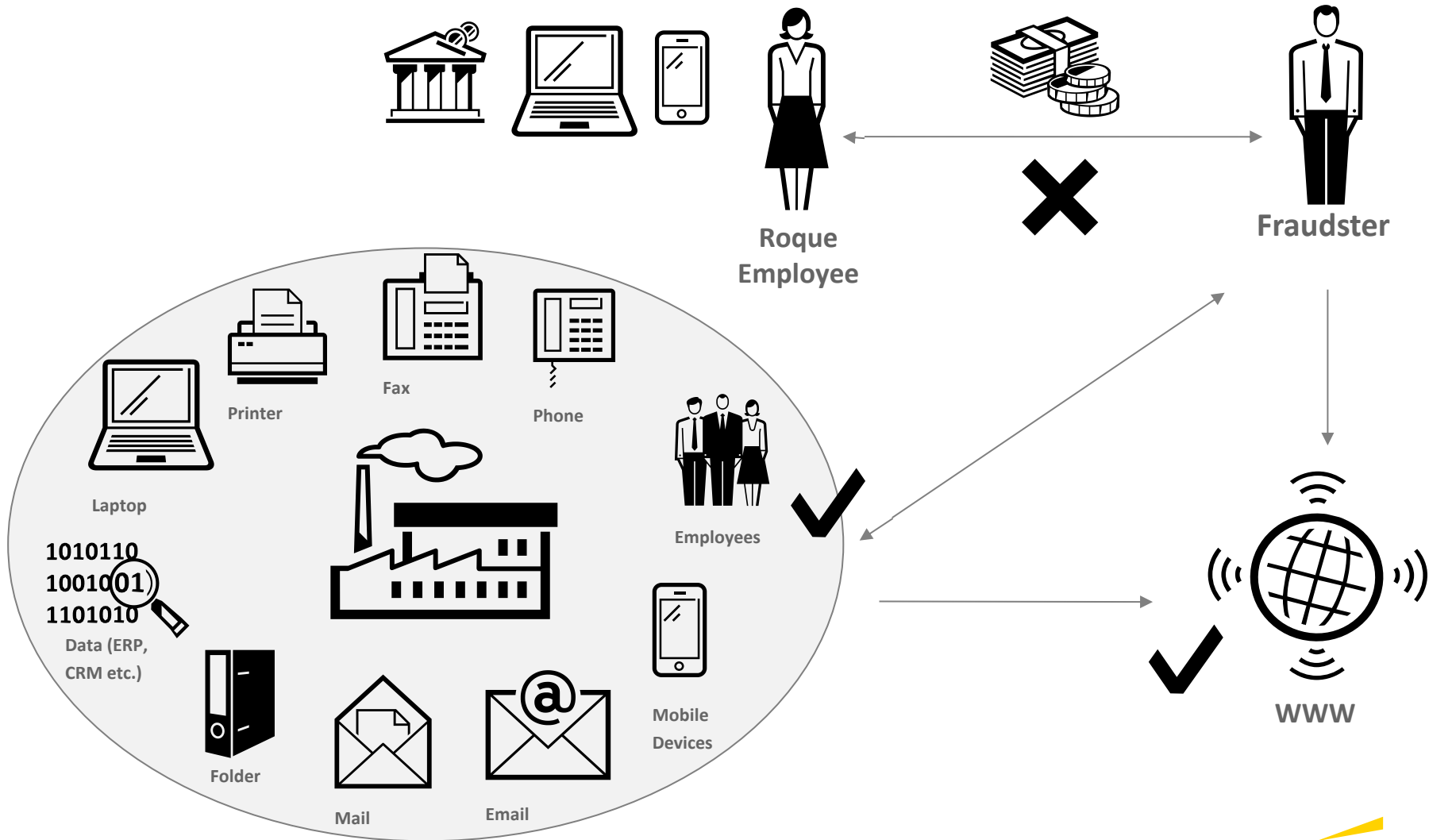


„Red flags“ for identifying suspicious relationships

Dr. Michael Faske

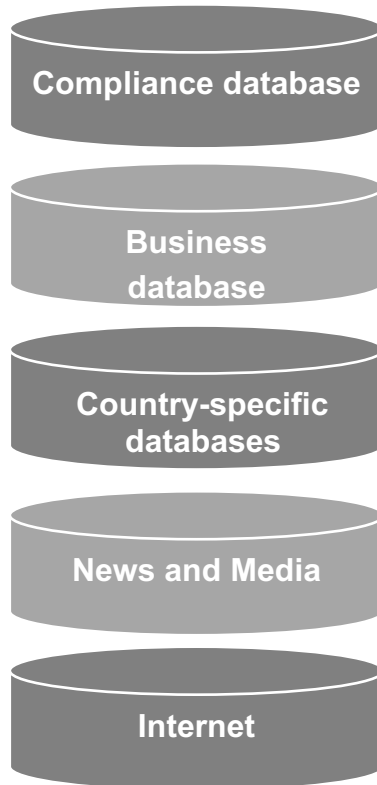
January 2019

The dilemma of spotting corruption





Third Party Due Diligence



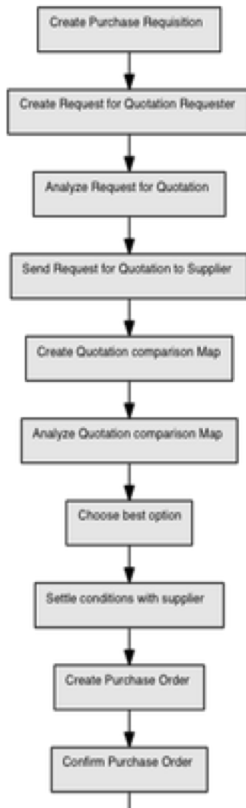
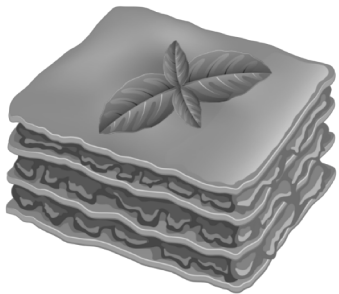
To Identify

Third Party
Background, reputation and ethical track record
Market reputation and credentials
Business history, activities and operations
Suspected involvement in bribery or corruption
Allegations of illegal or unethical business practices
Associations or relationships of potential concern
Regulatory and litigation history

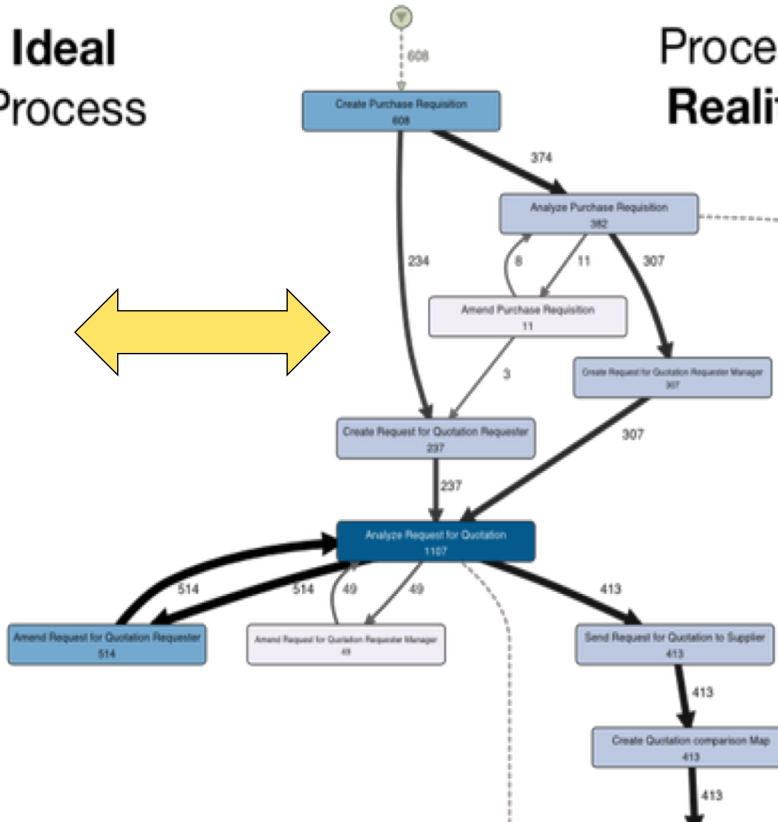


Courtesy Wil van der Aalst, Process Mining

Lasagne v/s Spaghetti



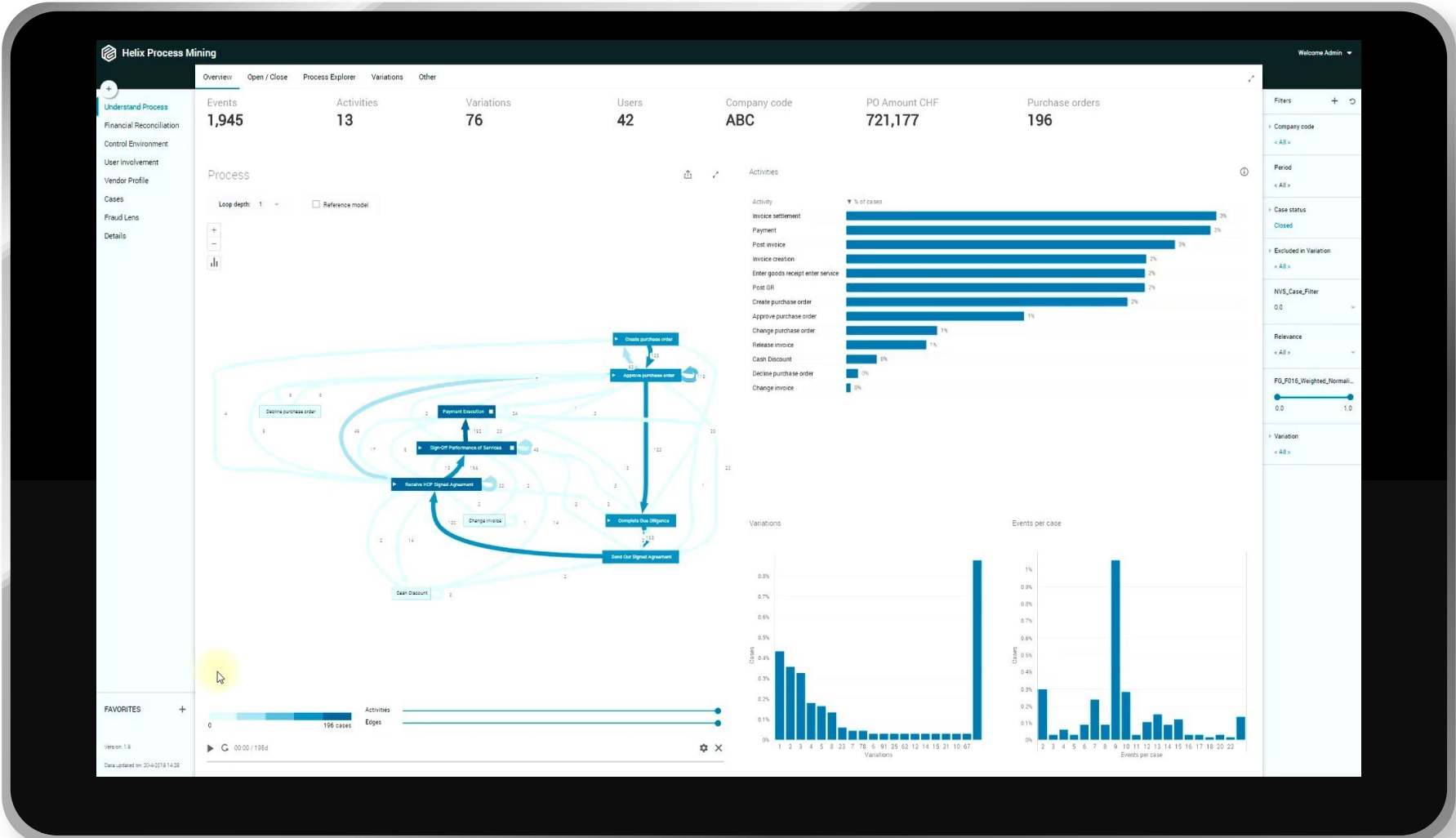
Ideal Process



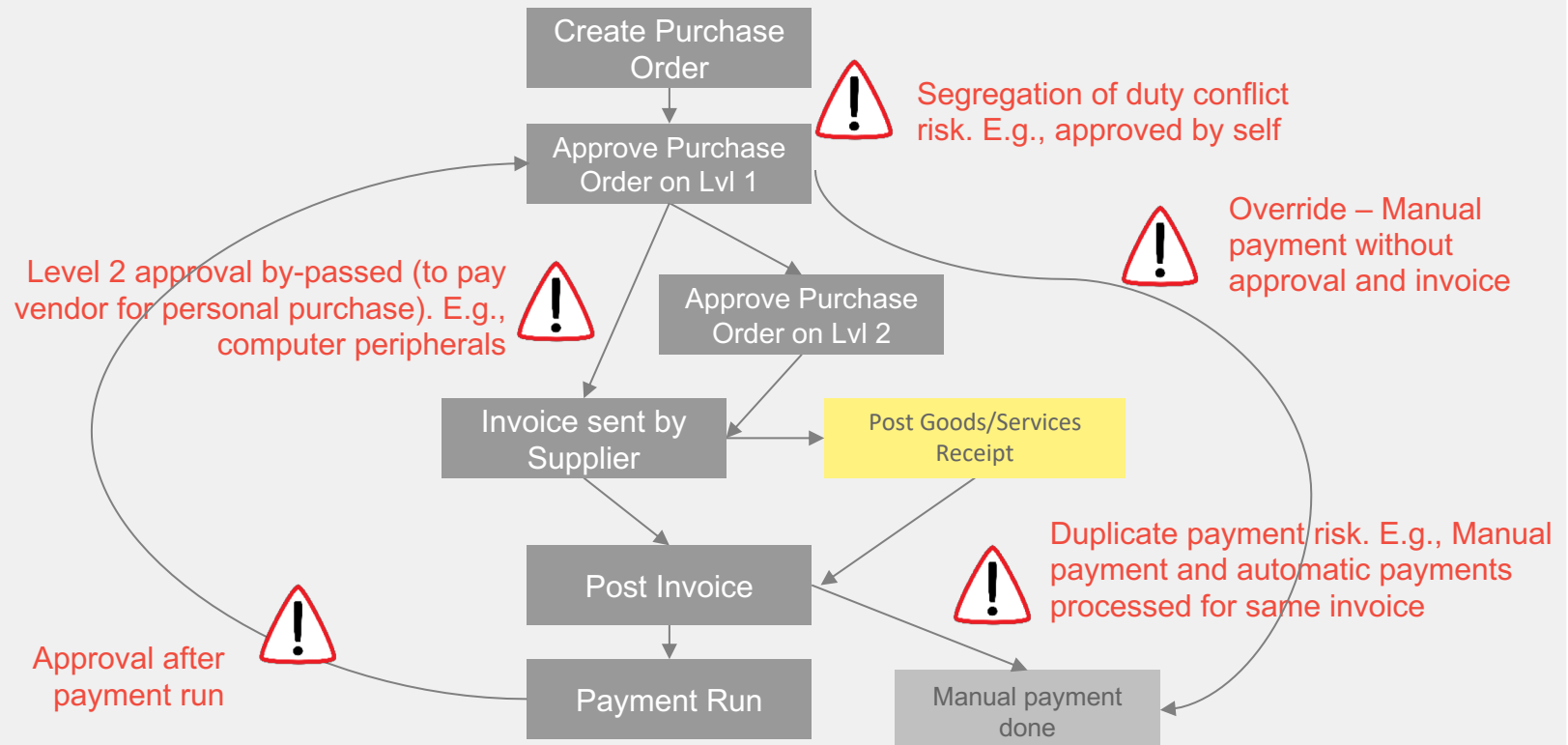
Process Reality



What is your Third Party interaction?



Process of purchasing from vendors



Reality – based on risk focused Process Mining

Q

&

A

